



PIANO PARTICOLAREGGIATO DEL CENTRO DI ANTICA E PRIMA FORMAZIONE

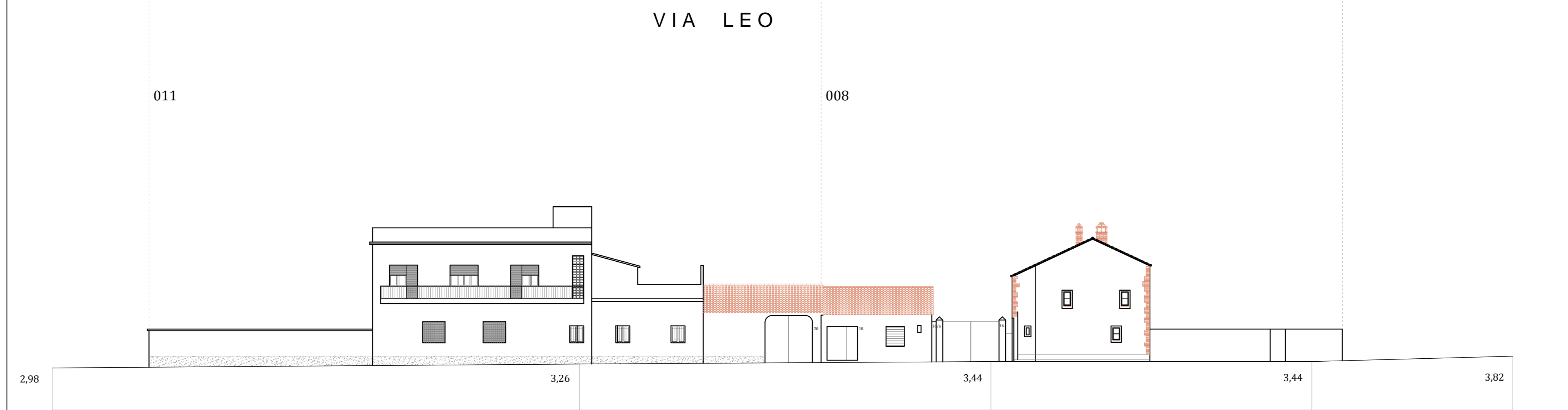


COMUNE DI ASSEMINI

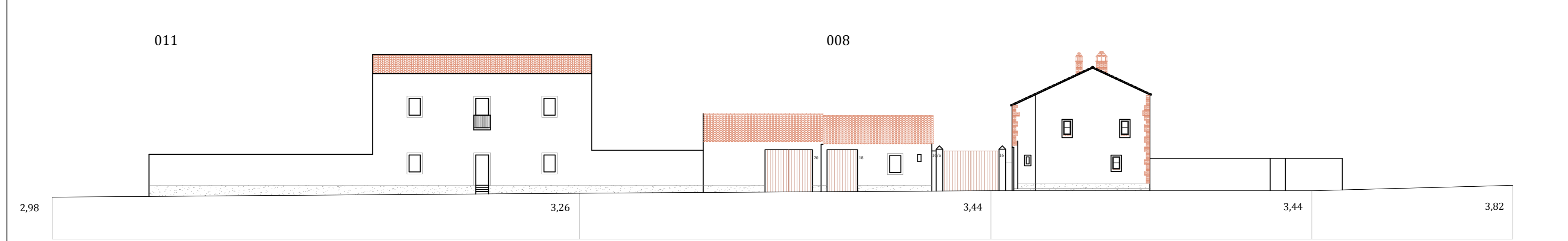
Isolato 1 - Via Leo  
TAVOLA 1 B  
Scala 1:200



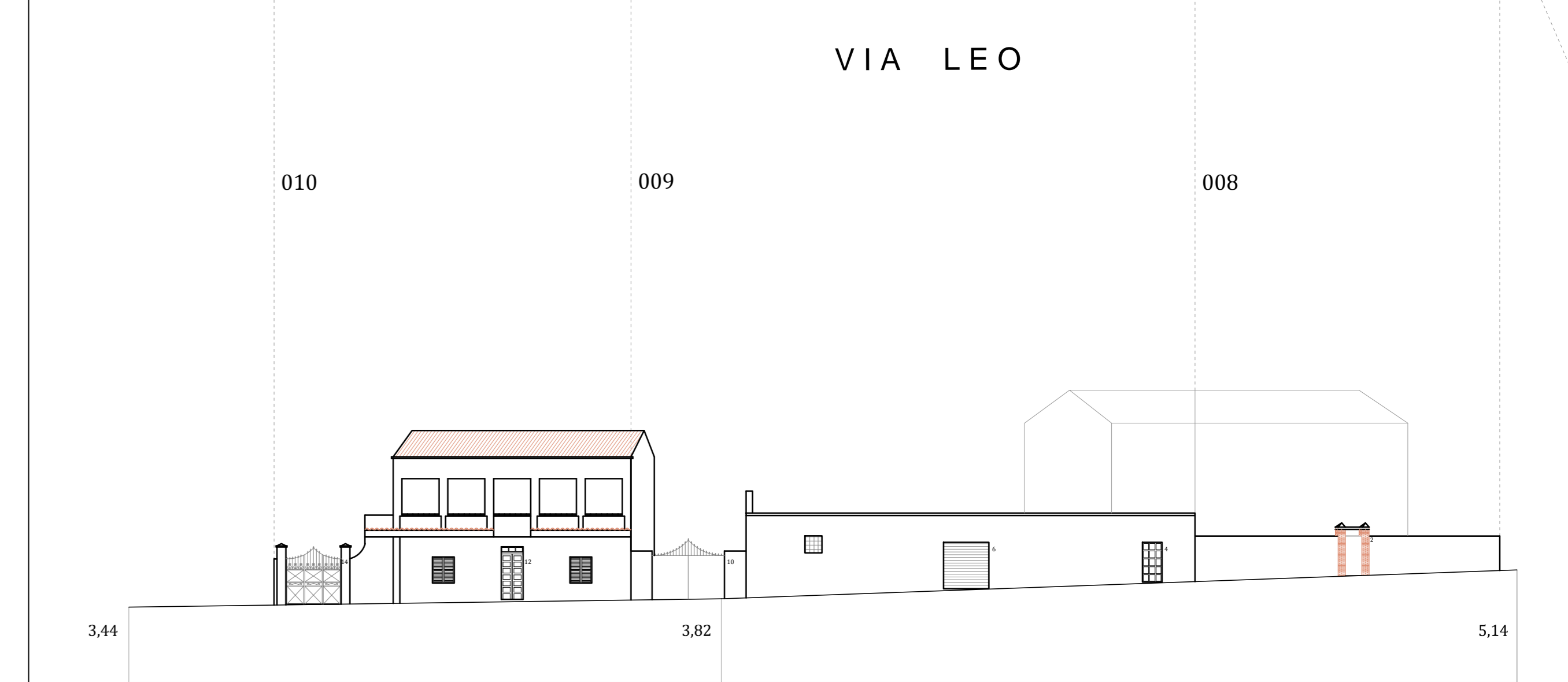
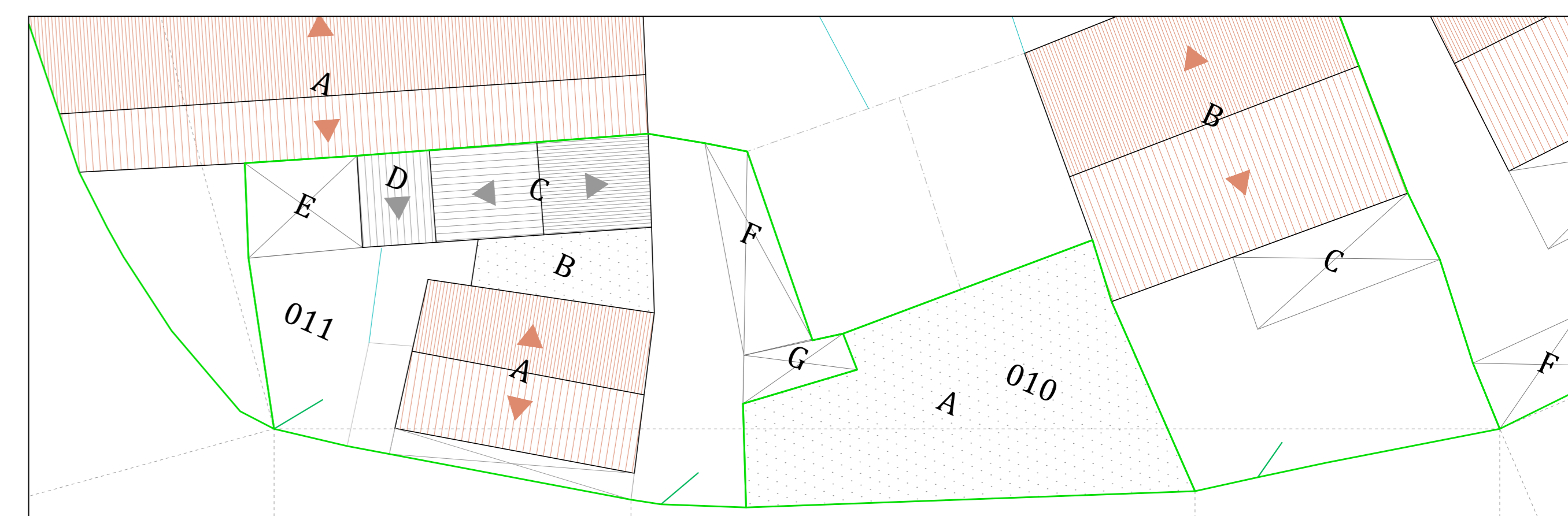
I PROGETTISTI: ING. ROBERTO LATI  
ARCH. MARIANNA MAMELI  
IL DIRIGENTE DELL'AREA TECNICA: ING. ALESSANDRA SALVATO  
IL COMMISSARIO STRAORDINARIO: DOTT. GEROLAMO SOLINA



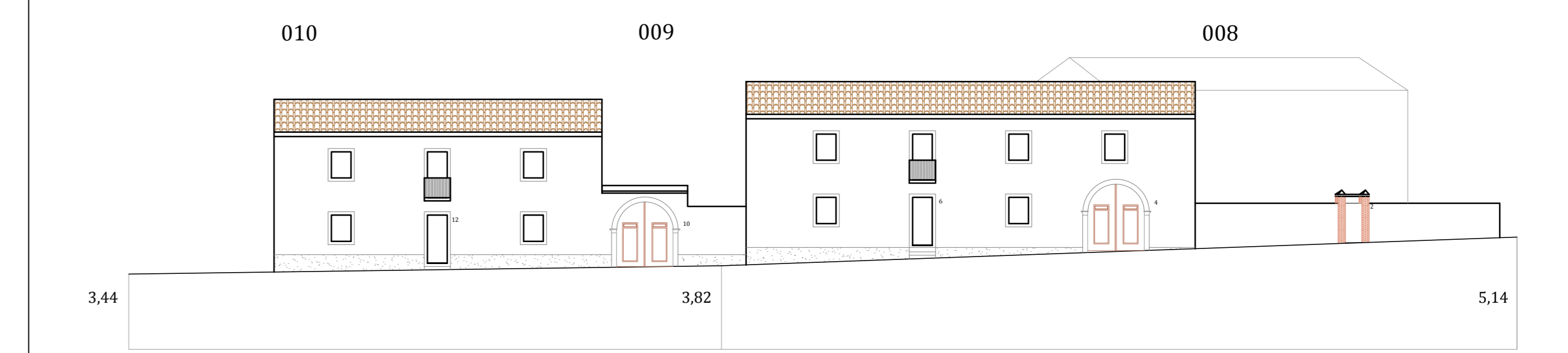
Via Leo  
ATTUALE



Via Leo  
PROFILO REGOLATORE



Via Leo  
ATTUALE



Via Leo  
PROFILO REGOLATORE