



PIANO PARTICOLAREGGIATO DEL CENTRO DI ANTICA E PRIMA FORMAZIONE



COMUNE DI ASSEMINI

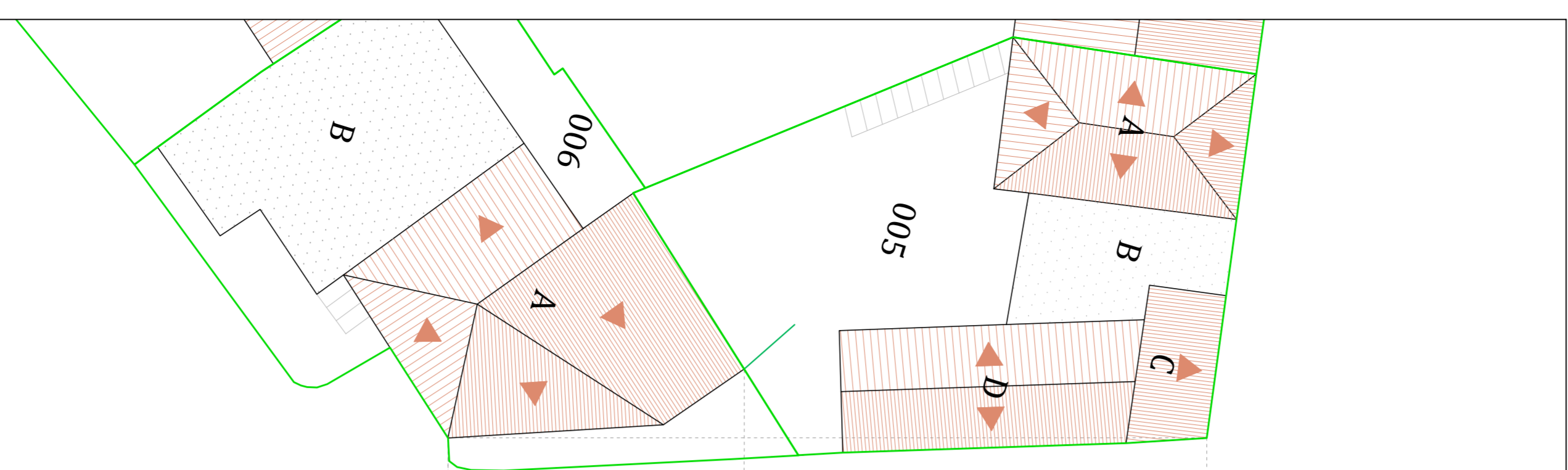
Isolato 1 - Via Angioj

TAVOLA 1C

Scala 1:200

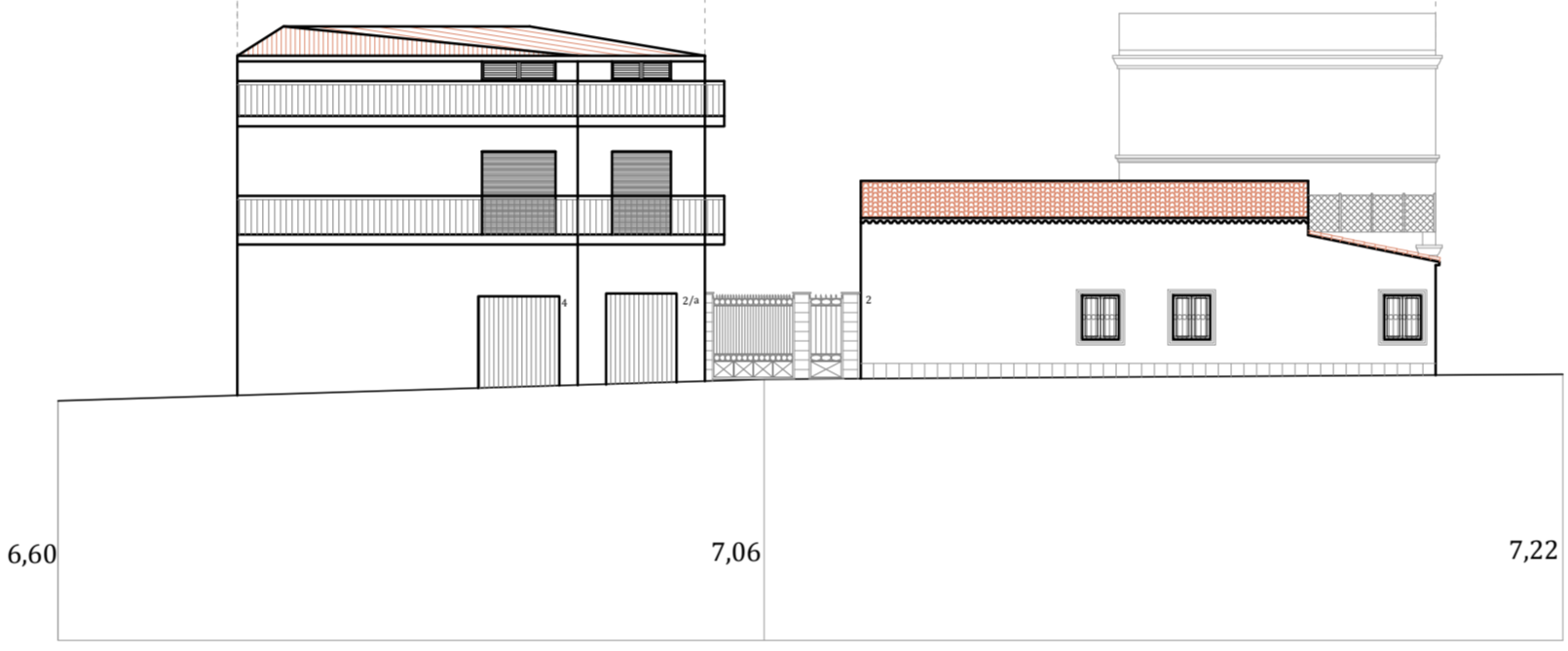


I PROGETTISTI: ING. ROBERTO LATI
ARCH. MARIANNA MAMELI
IL DIRIGENTE DELL'AREA TECNICA: ING. ALESSANDRA SALVATO
IL COMMISSARIO STRAORDINARIO: DOTT. GEROLAMO SOLINA



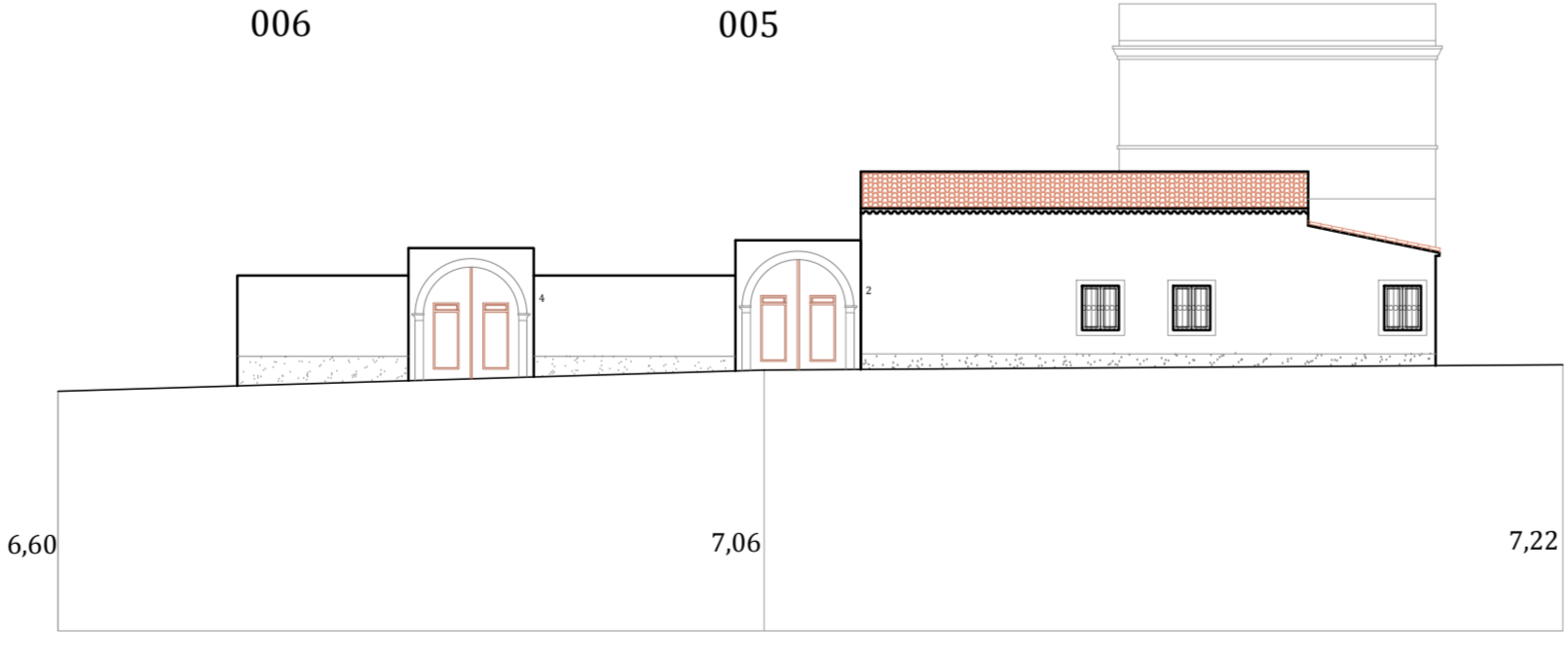
VIA ANGIOJ

006 005

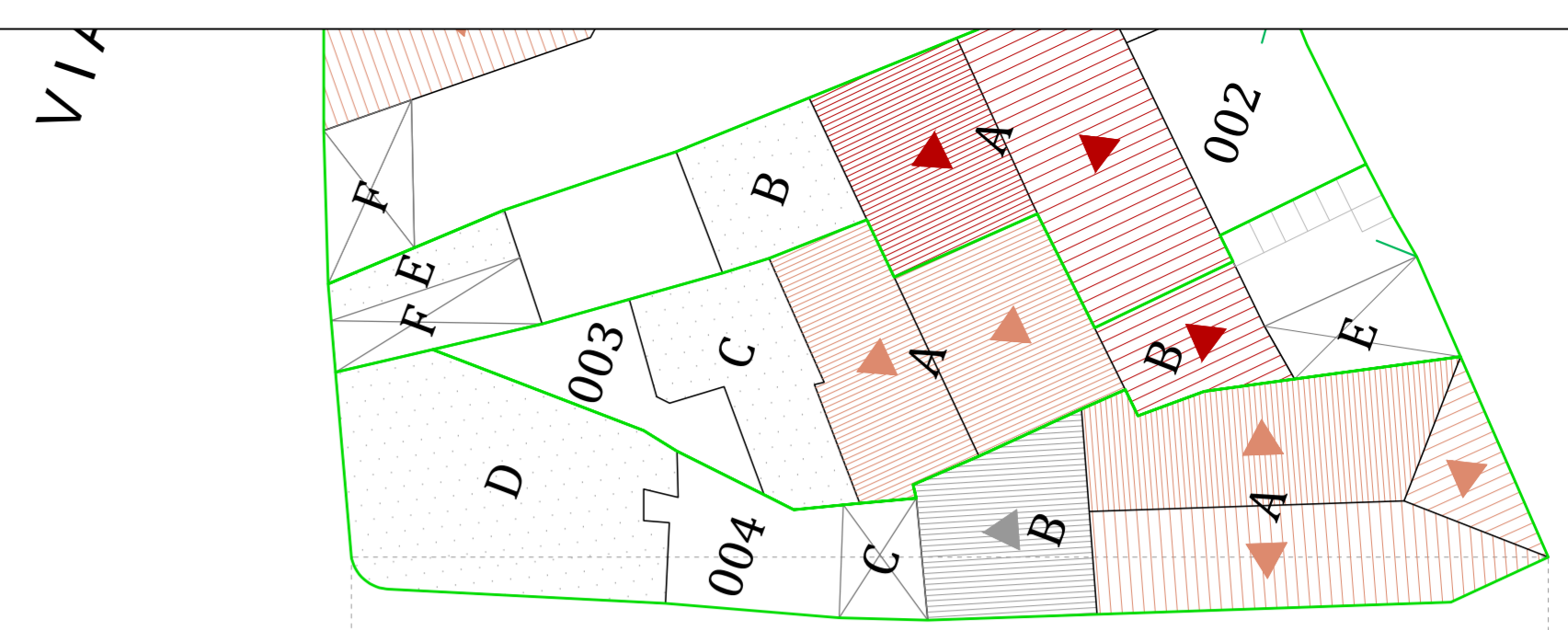


Via Angioj
ATTUALE

006 005

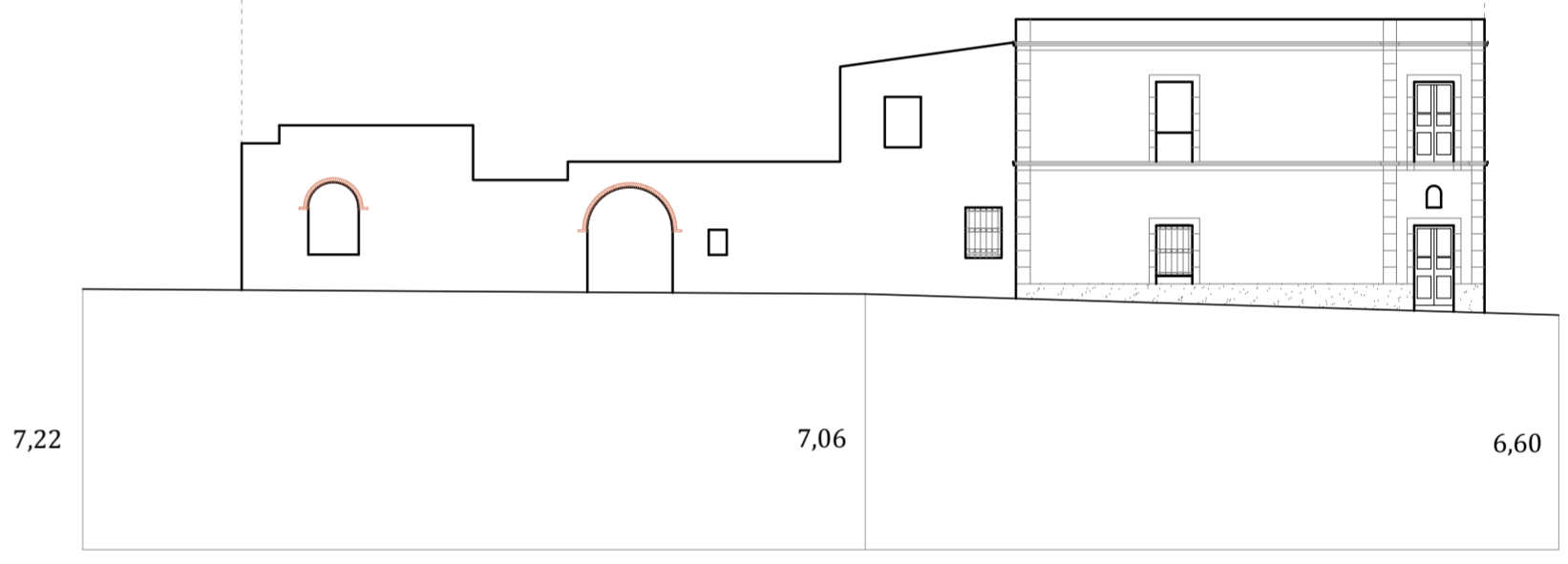


Via Angioj
PROFILO REGOLATORE



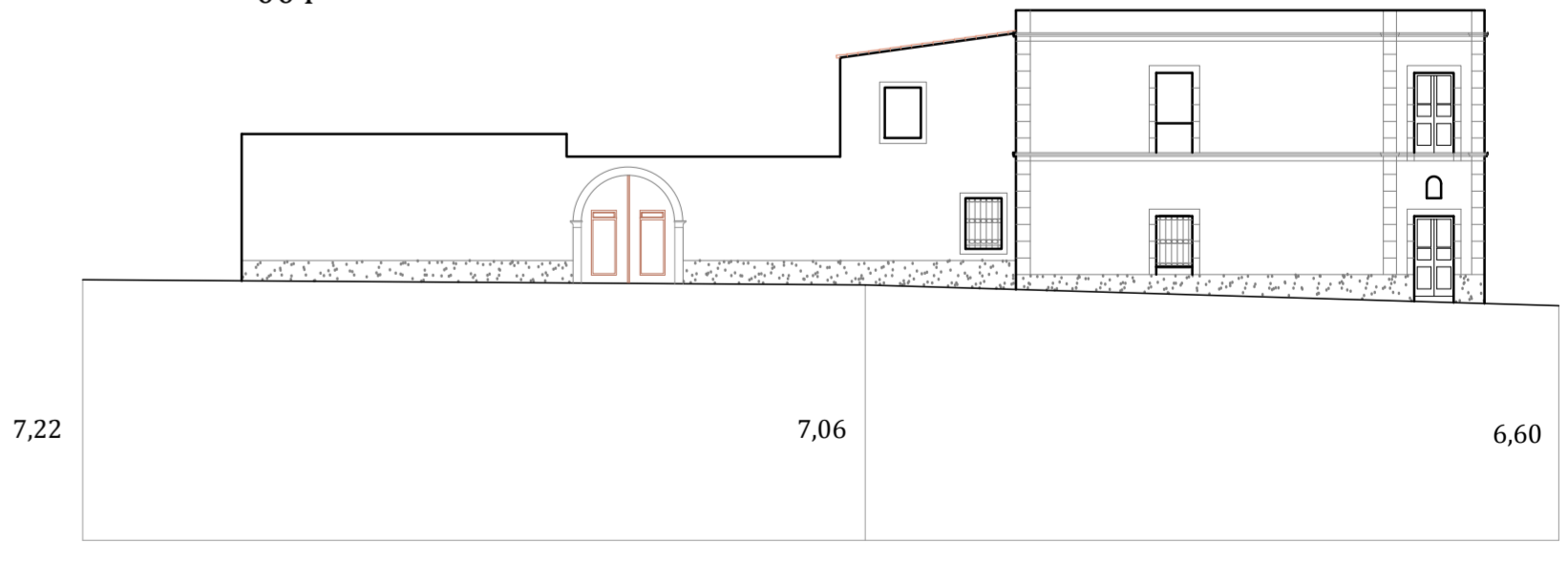
VIA ANGIOJ

004



Via Angioj
ATTUALE

004



Via Angioj
PROFILO REGOLATORE