



COMUNE DI ASSEMINI

Isolato 11 - Via Nino Bixio

TAVOLA 11C

Scala 1:200



I PROGETTISTI: ING. ROBERTO LATI

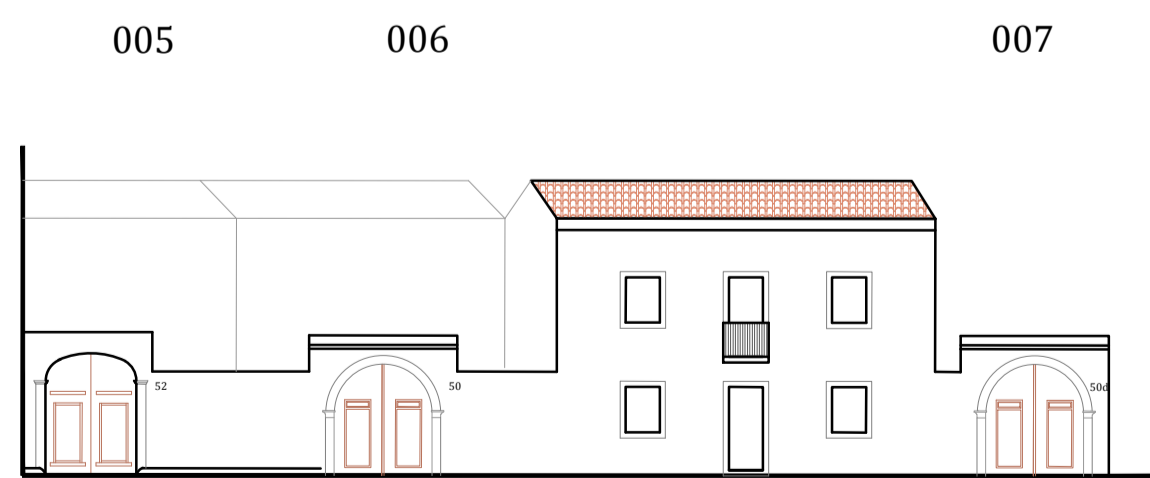
ARCH. MARIANNA MAMELI

IL DIRIGENTE DELL'AREA TECNICA: ING. ALESSANDRA SALVATO

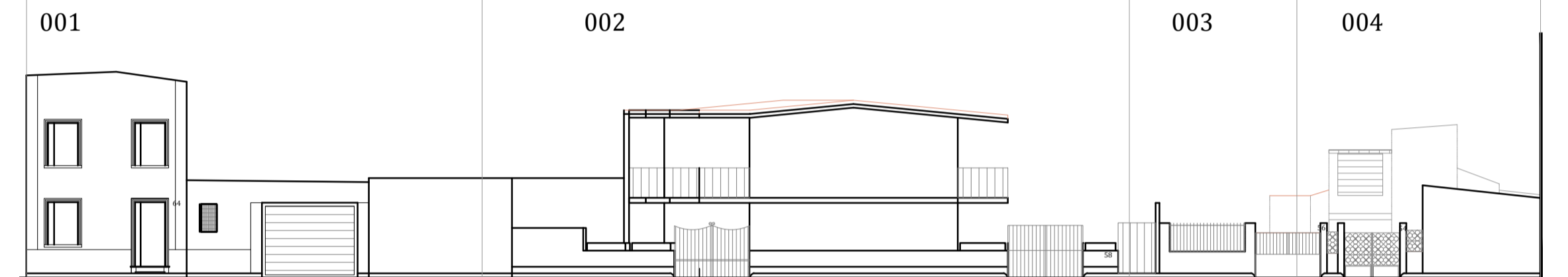
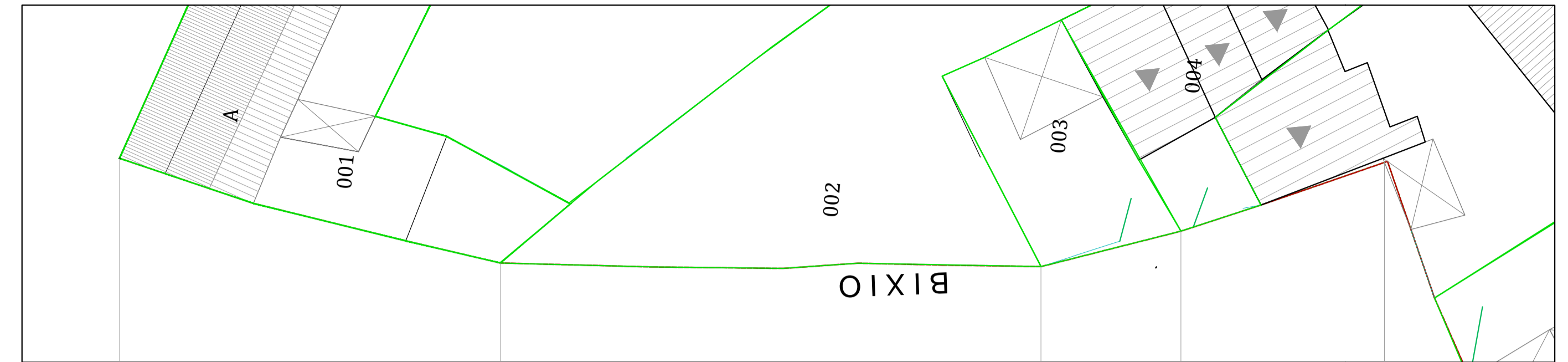
IL COMMISSARIO STRAORDINARIO: DOTT. GEROLAMO SOLINA



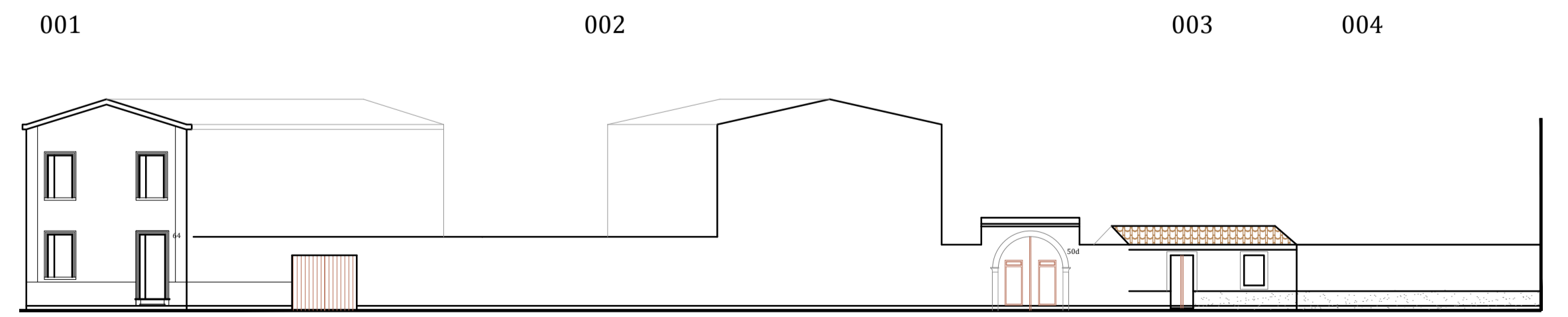
Via Nino Bixio  
ATTUALE



Via Nino Bixio  
PROFILO REGOLATORE



Via Nino Bixio  
ATTUALE



Via Nino Bixio  
PROFILO REGOLATORE