



COMUNE DI ASSEMINI

Isolato 11 - Via Garibaldi

TAVOLA 11D

Scala 1:200

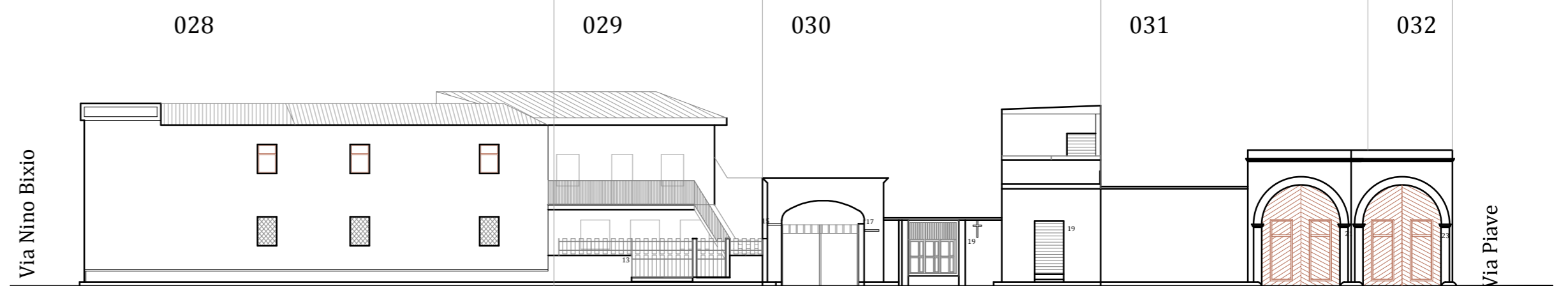
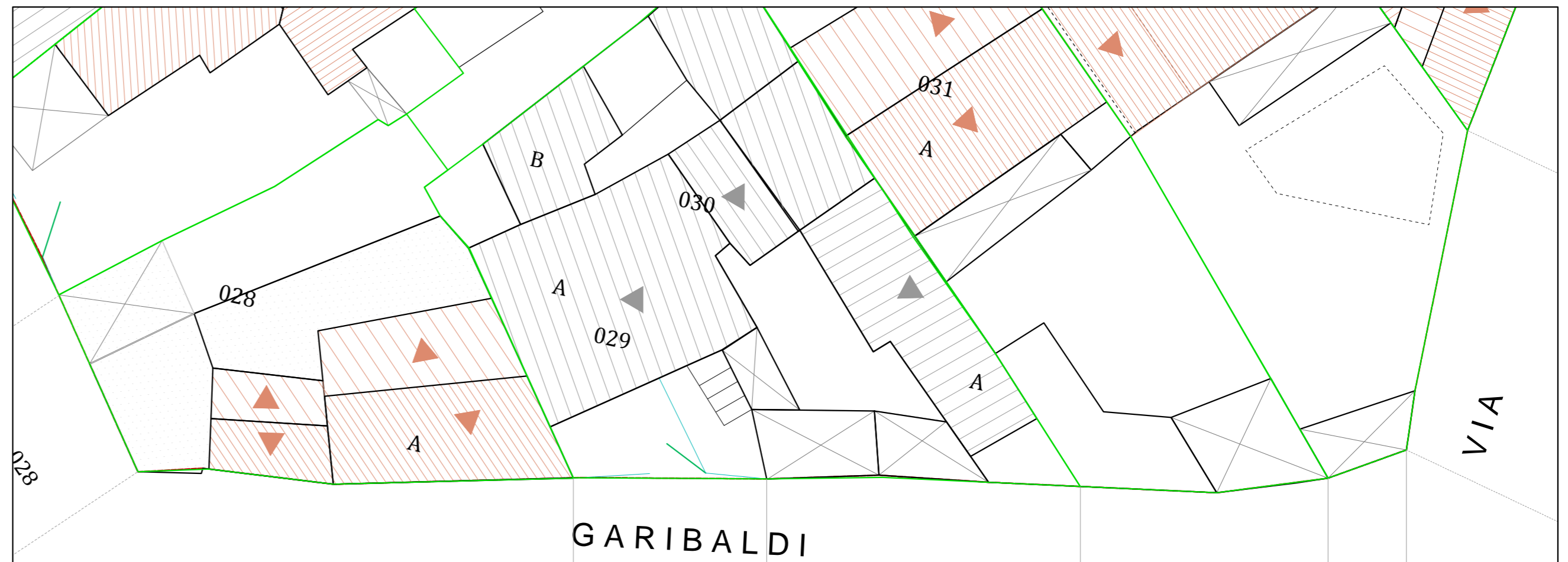


I PROGETTISTI: ING. ROBERTO LATTI

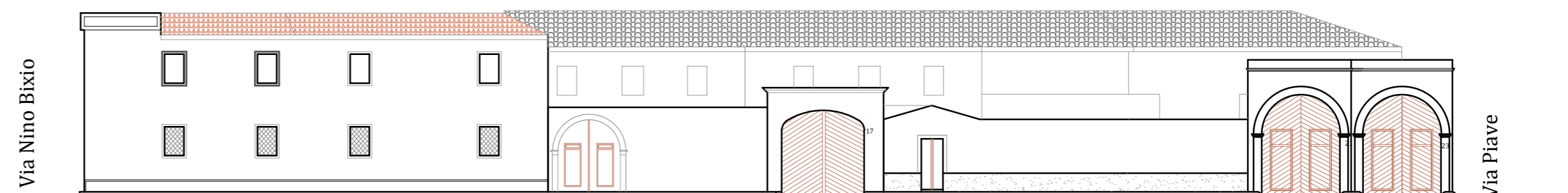
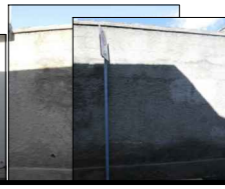
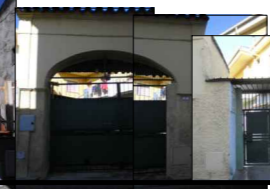
ARCH. MARIANNA MAMELI

IL DIRIGENTE DELL'AREA TECNICA: ING. ALESSANDRA SALVATO

IL COMMISSARIO STRAORDINARIO: DOTT. GEROLAMO SOLINA



Via Garibaldi
ATTUALE



Via Garibaldi
ATTUALE