

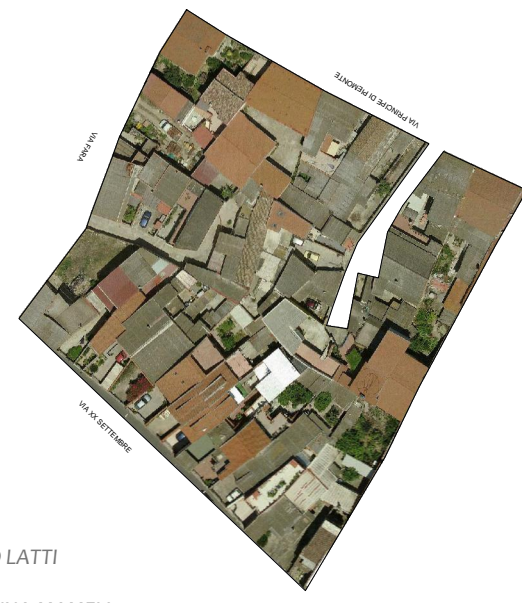


COMUNE DI ASSEMINI

Isolato 16 - Via Fara

TAVOLA 16C

Scala 1:200

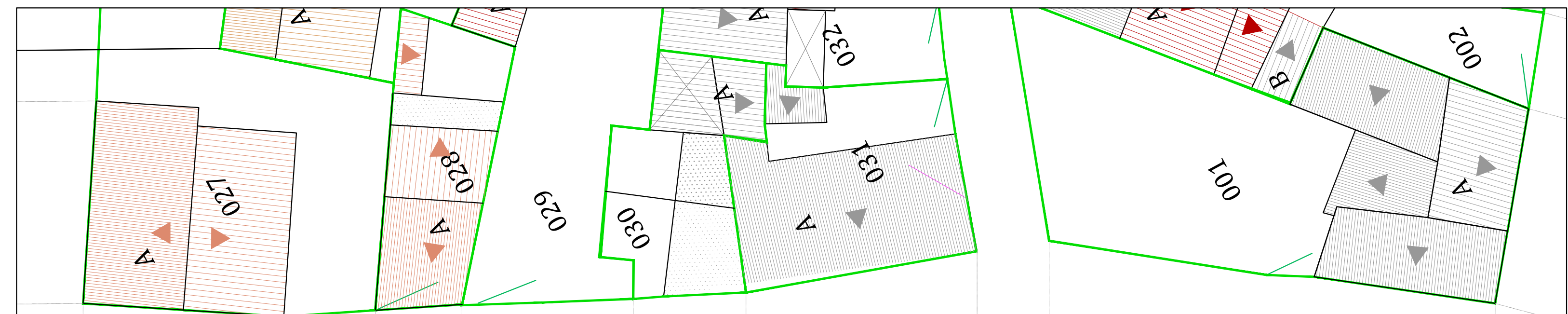


I PROGETTISTI: ING. ROBERTO LATTI

ARCH. MARIANNA MAMELI

IL DIRIGENTE DELL'AREA TECNICA: ING. ALESSANDRA SALVATO

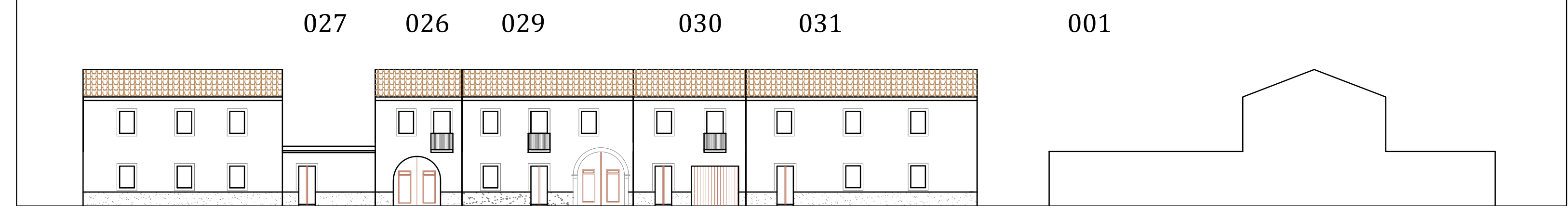
IL COMMISSARIO STRAORDINARIO: DOTT. GEROLAMO SOLINA



VIA FARA



Via Fara
ATTUALE



Via Fara
PROFILO REGOLATORE