





PIANO PARTICOLAREGGIATO DEL CENTRO DI ANTICA E PRIMA FORMAZIONE

 **COMUNE DI ASSEMINI**

Isolato 18 - Via Isonzo, Via Arno

TAVOLA 18B

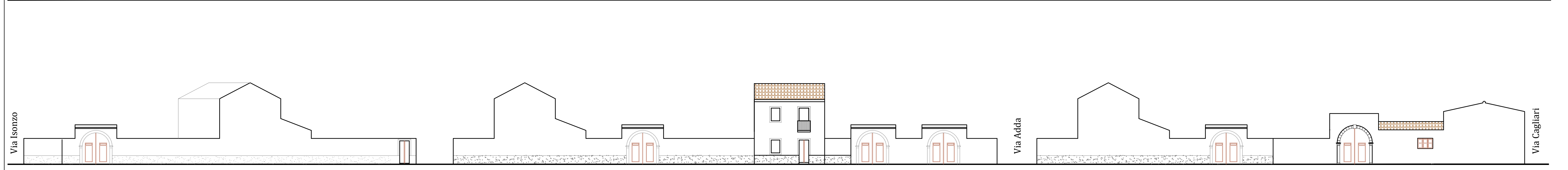
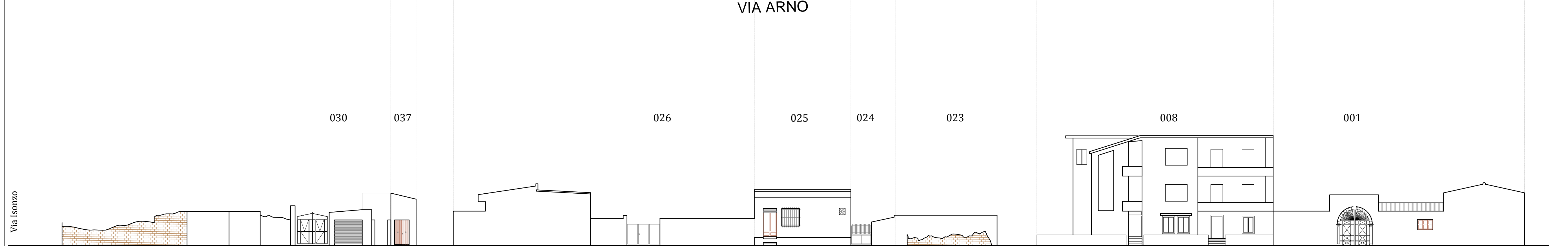
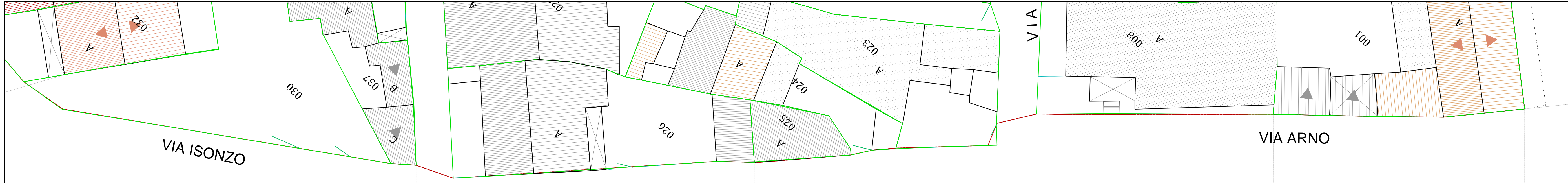
Scala 1:200



I PROGETTISTI: ING. ROBERTO LATTI
 ARCH. MARIANNA MAMELI

IL DIRIGENTE DELL'AREA TECNICA: ING. ALESSANDRA SALVATO

IL COMMISSARIO STRAORDINARIO: DOTT. GEROLAMO SOLINA



Via Isonzo PROFILO REGOLATORE

Via Arno PROFILO REGOLATORE