

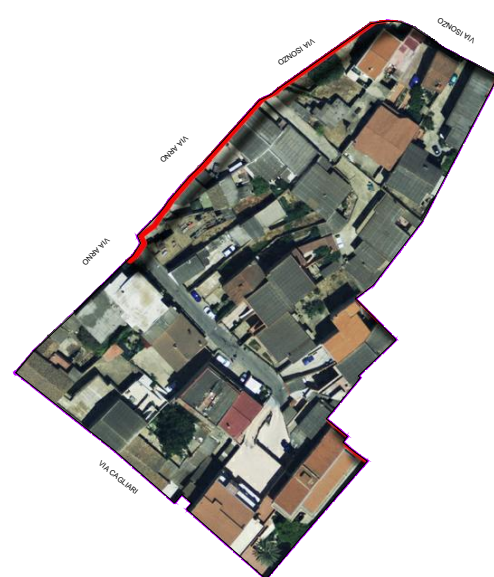


COMUNE DI ASSEMINI

Isolato 18 - Via Adda Sud

TAVOLA 18E

Scala 1:200

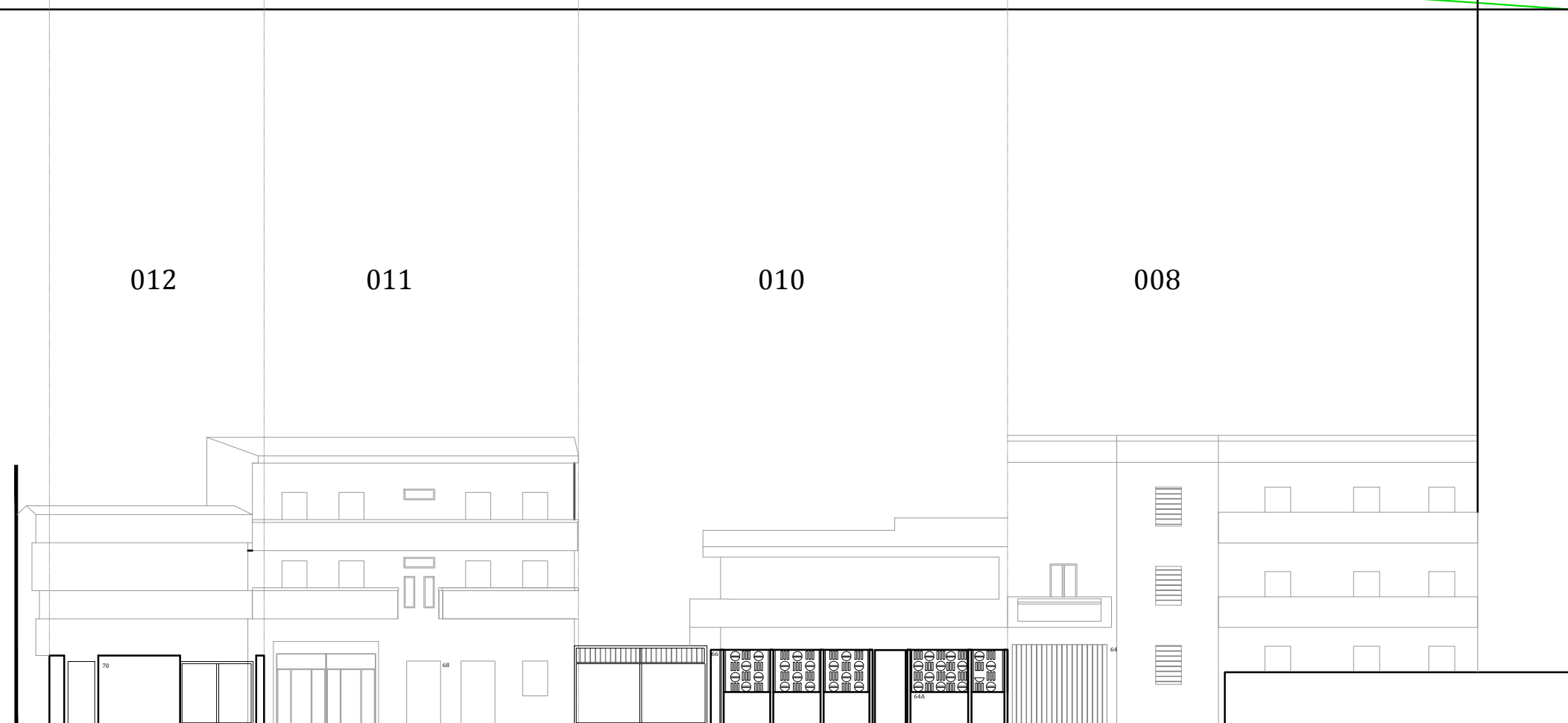
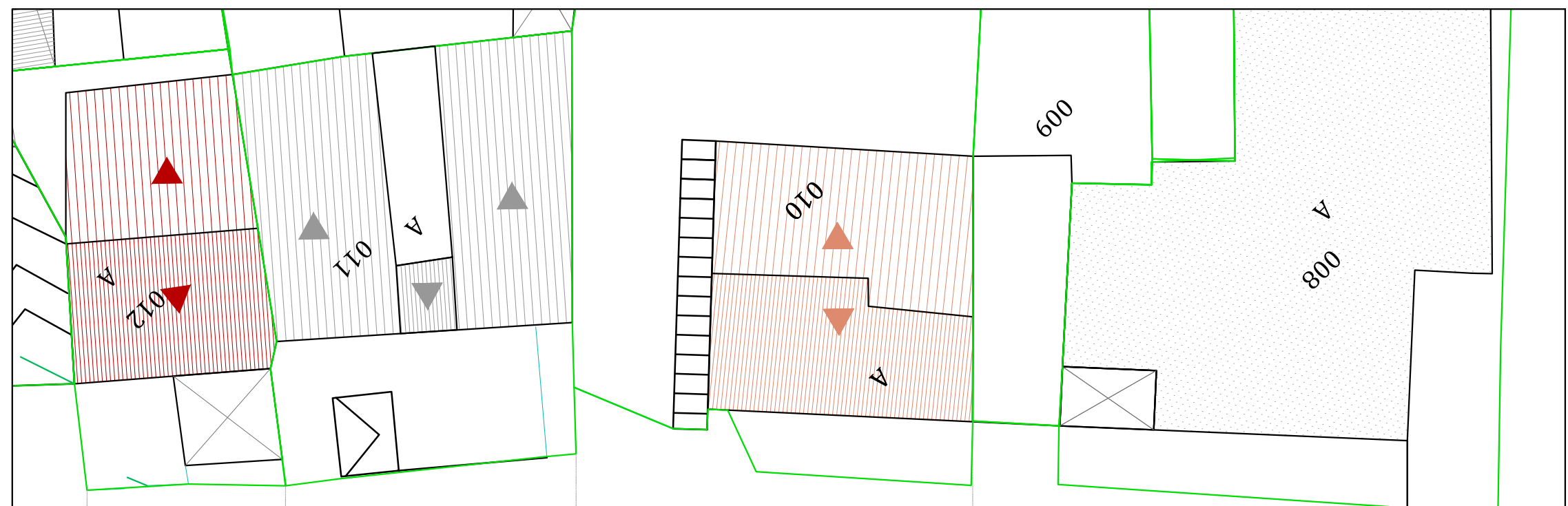


I PROGETTISTI: ING. ROBERTO LATTI

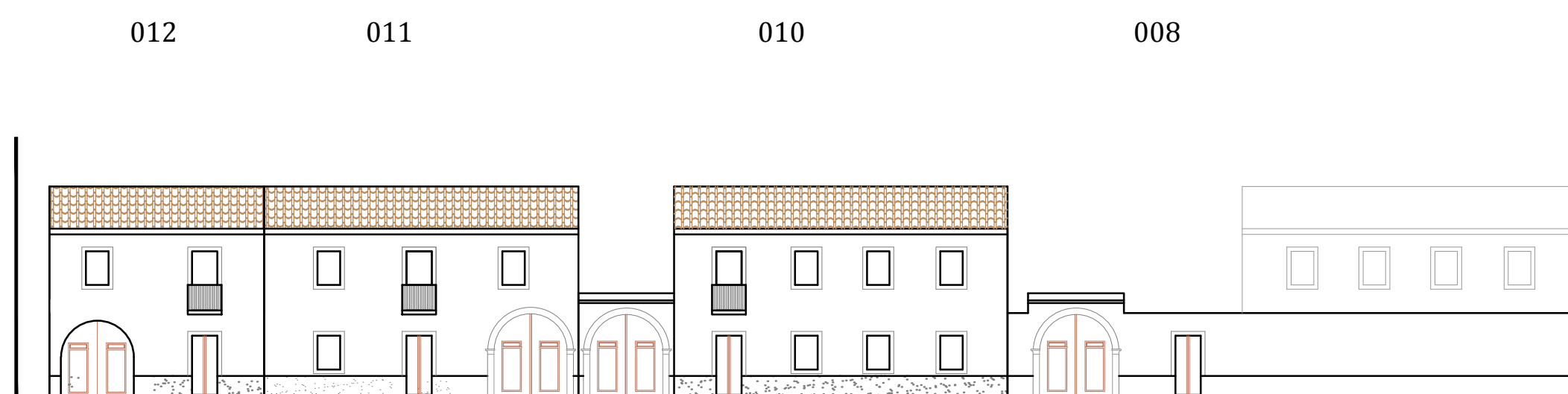
ARCH. MARIANNA MAMELI

IL DIRIGENTE DELL'AREA TECNICA: ING. ALESSANDRA SALVATO

IL COMMISSARIO STRAORDINARIO: DOTT. GEROLAMO SOLINA



Via Adda
ATTUALE



Via Adda
PROFILO REGOLATORE