



COMUNE DI ASSEMINI

Isolato 19 - Via Cagliari

TAVOLA 19A

Scala 1:200

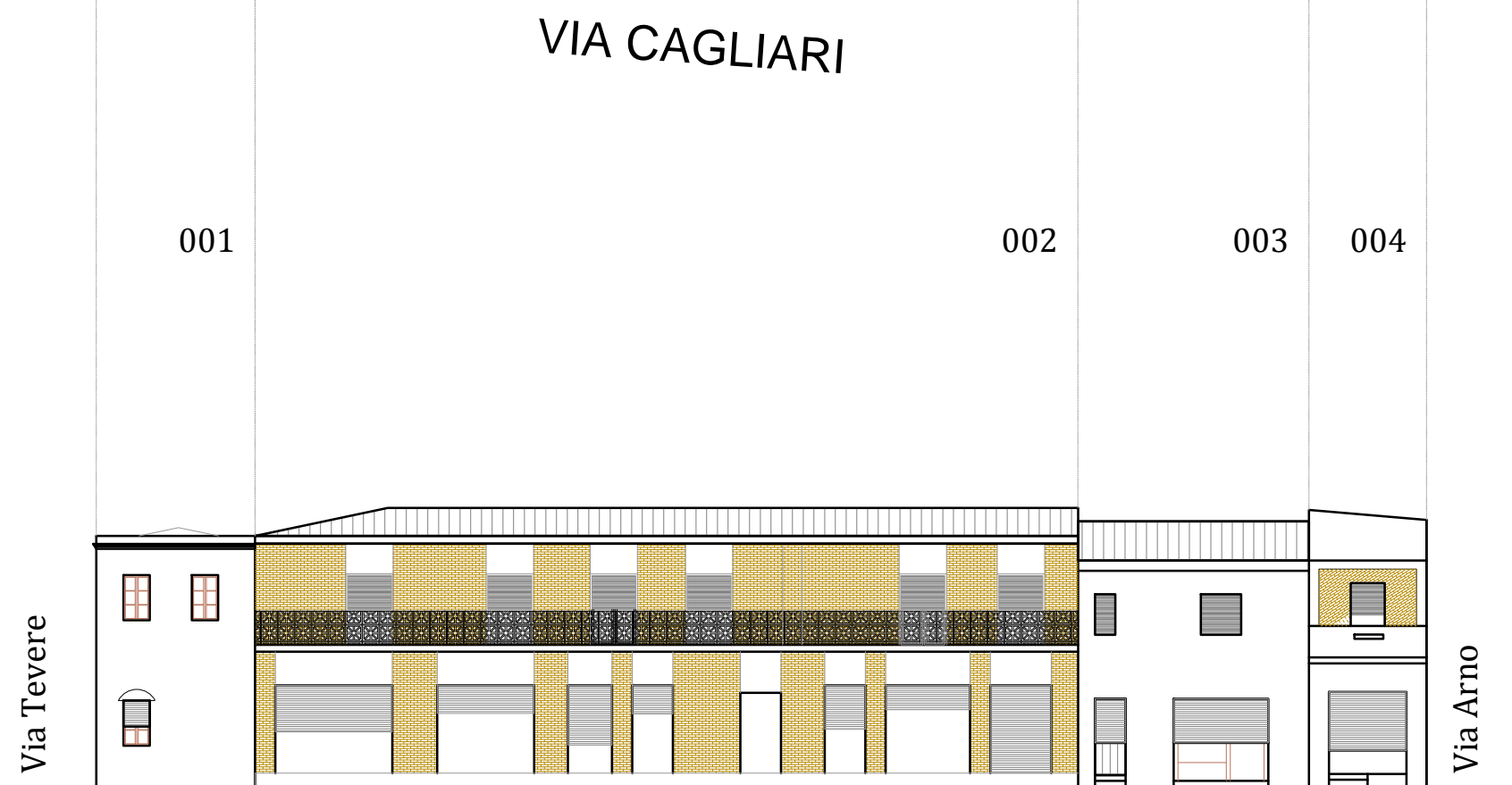
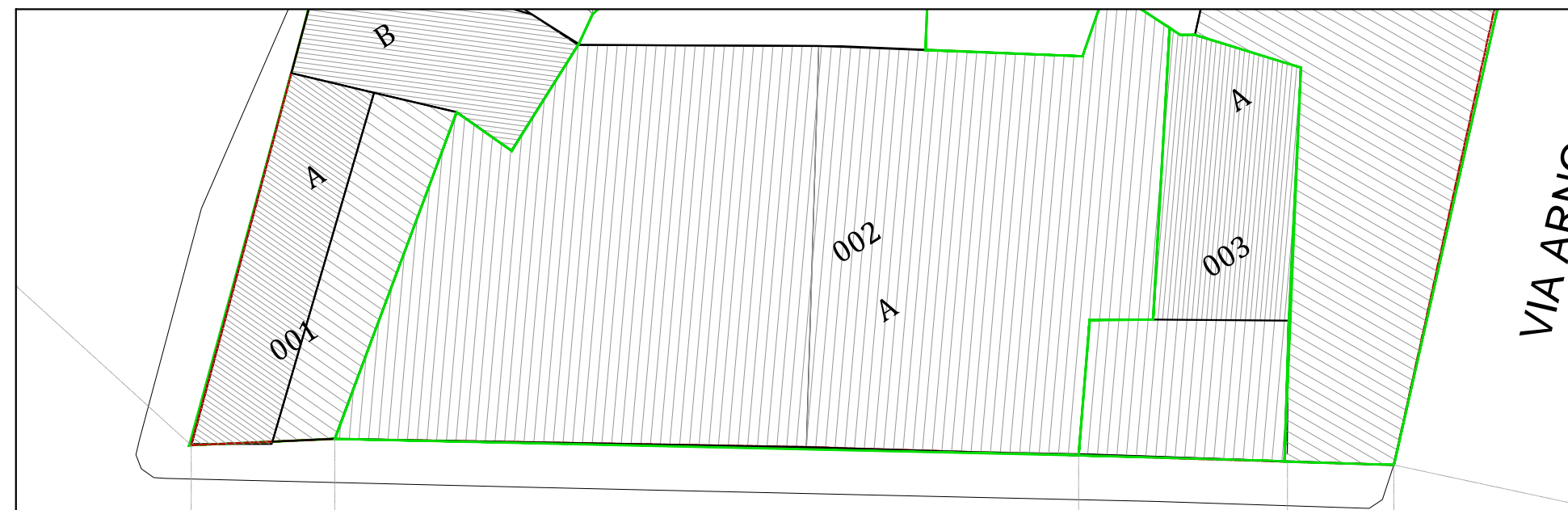


I PROGETTISTI: ING. ROBERTO LATTI

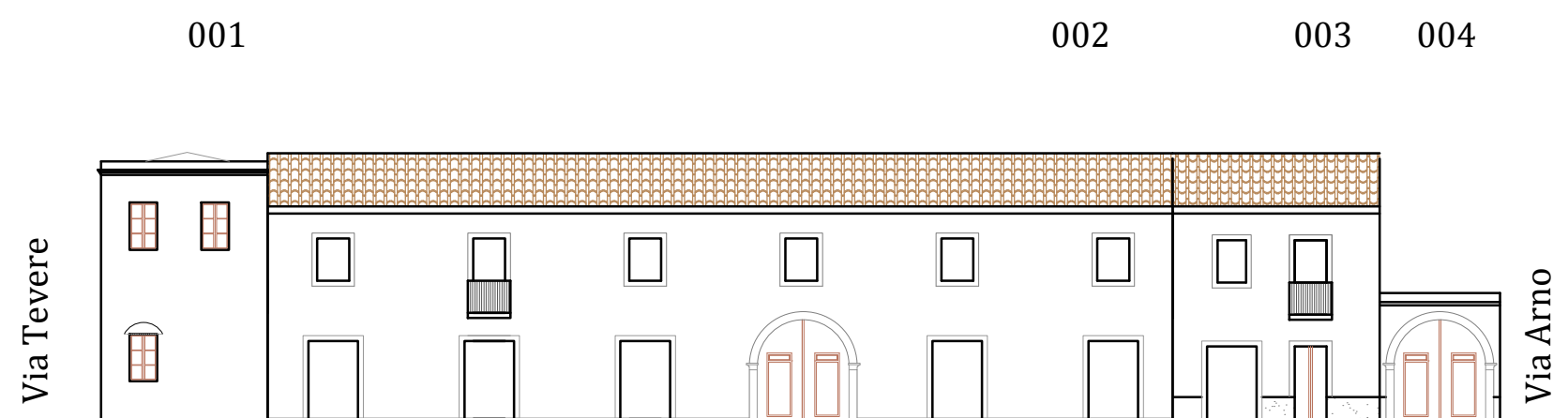
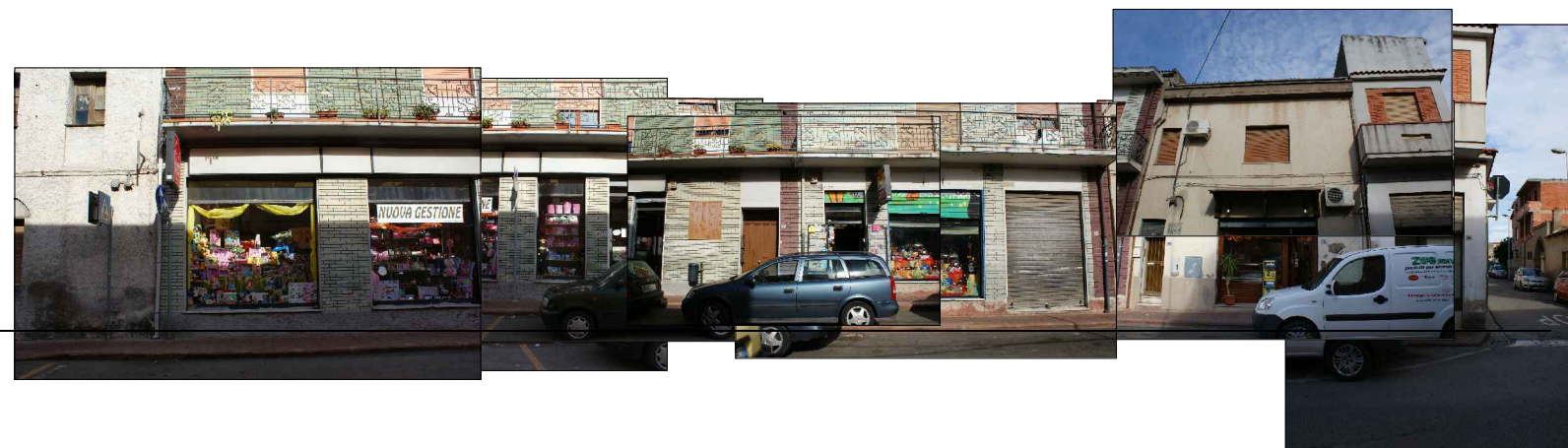
ARCH. MARIANNA MAMELI

IL DIRIGENTE DELL'AREA TECNICA: ING. ALESSANDRA SALVATO

IL COMMISSARIO STRAORDINARIO: DOTT. GEROLAMO SOLINA



Via Cagliari
ATTUALE



Via Cagliari
PROFILO REGOLATORE