



COMUNE DI ASSEMINI

Isolato 19 - Via Tevere

TAVOLA 19C

Scala 1:200

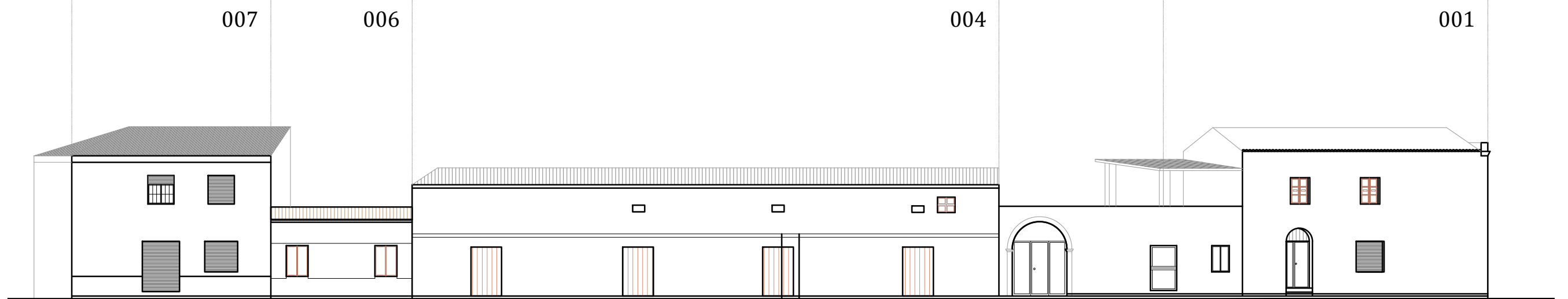
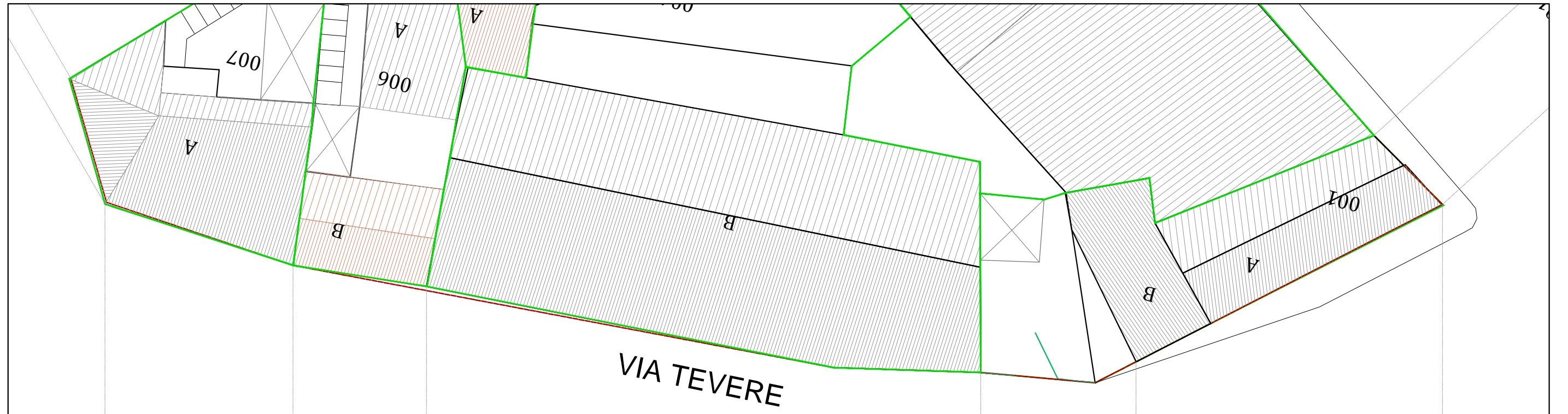


I PROGETTISTI: ING. ROBERTO LATTI

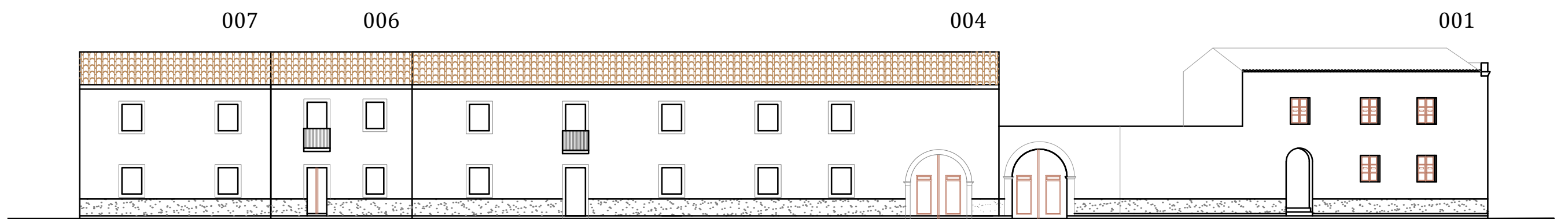
ARCH. MARIANNA MAMELI

IL DIRIGENTE DELL'AREA TECNICA: ING. ALESSANDRA SALVATO

IL COMMISSARIO STRAORDINARIO: DOTT. GEROLAMO SOLINA



Via Tevere
ATTUALE



Via Tevere
ATTUALE