



COMUNE DI ASSEMINI

Isolato 2 - Via Trieste

TAVOLA 2F

Scala 1:200

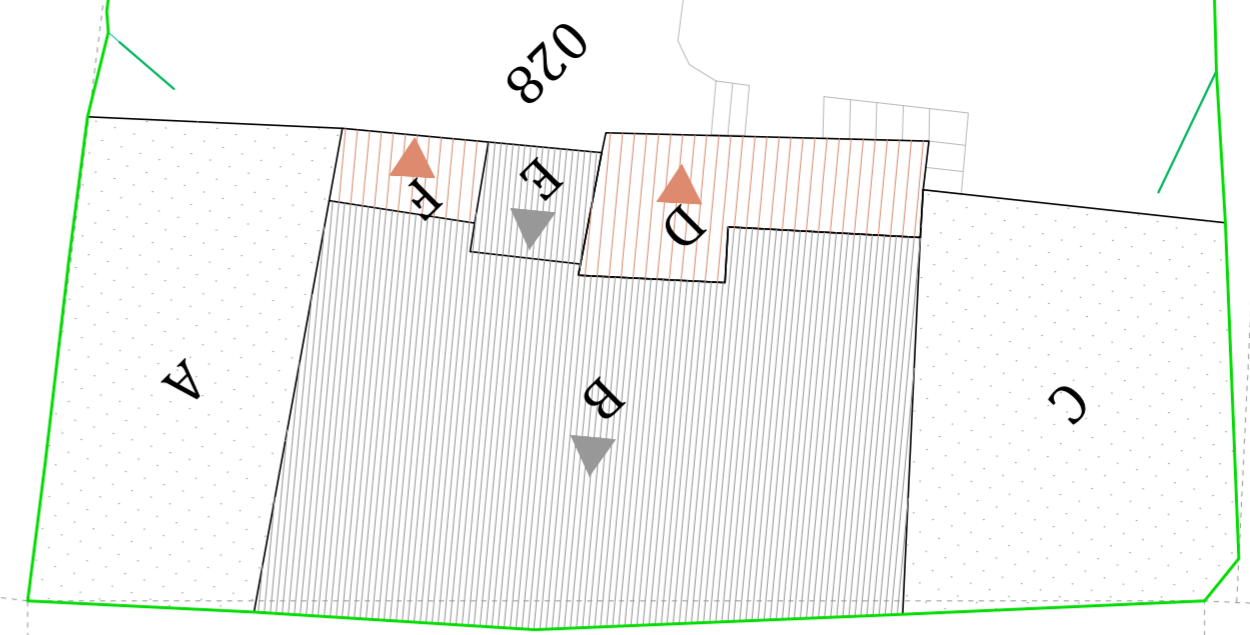


I PROGETTISTI: ING. ROBERTO LATTI

ARCH. MARIANNA MAMELI

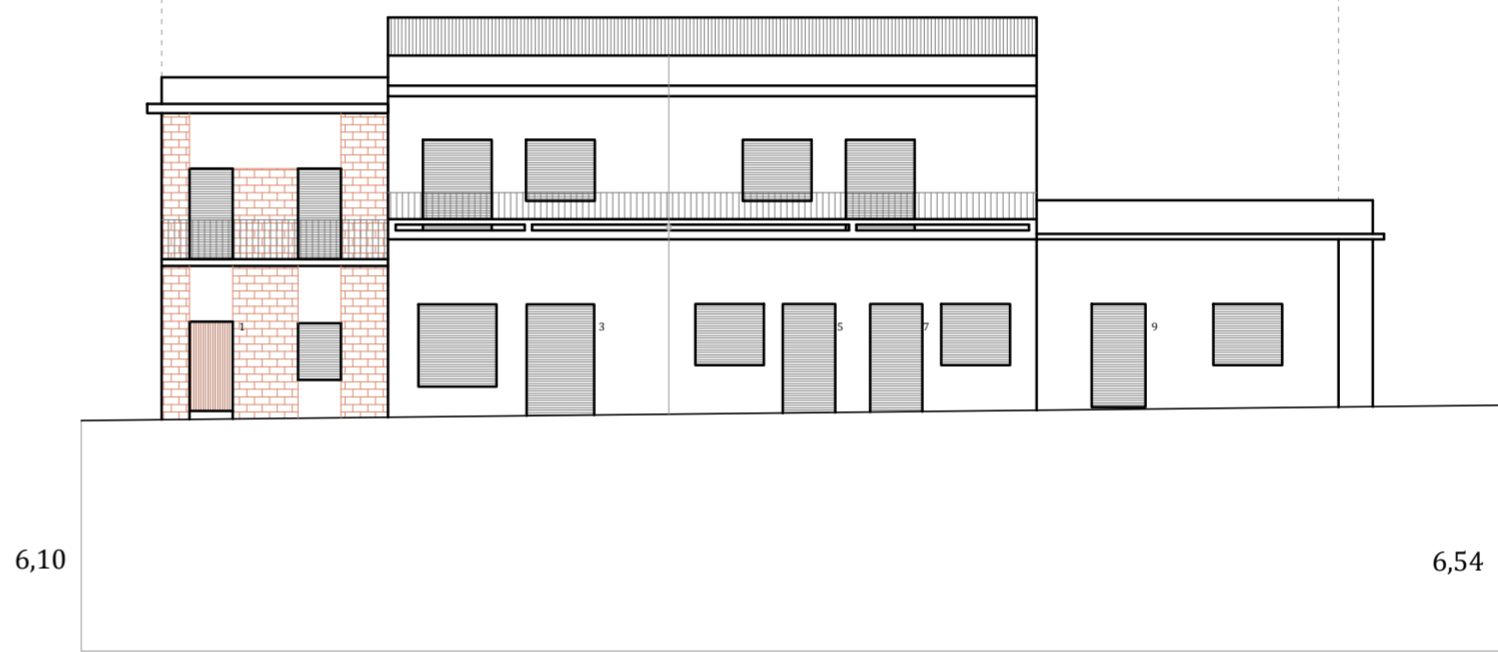
IL DIRIGENTE DELL'AREA TECNICA: ING. ALESSANDRA SALVATO

IL COMMISSARIO STRAORDINARIO: DOTT. GEROLAMO SOLINA



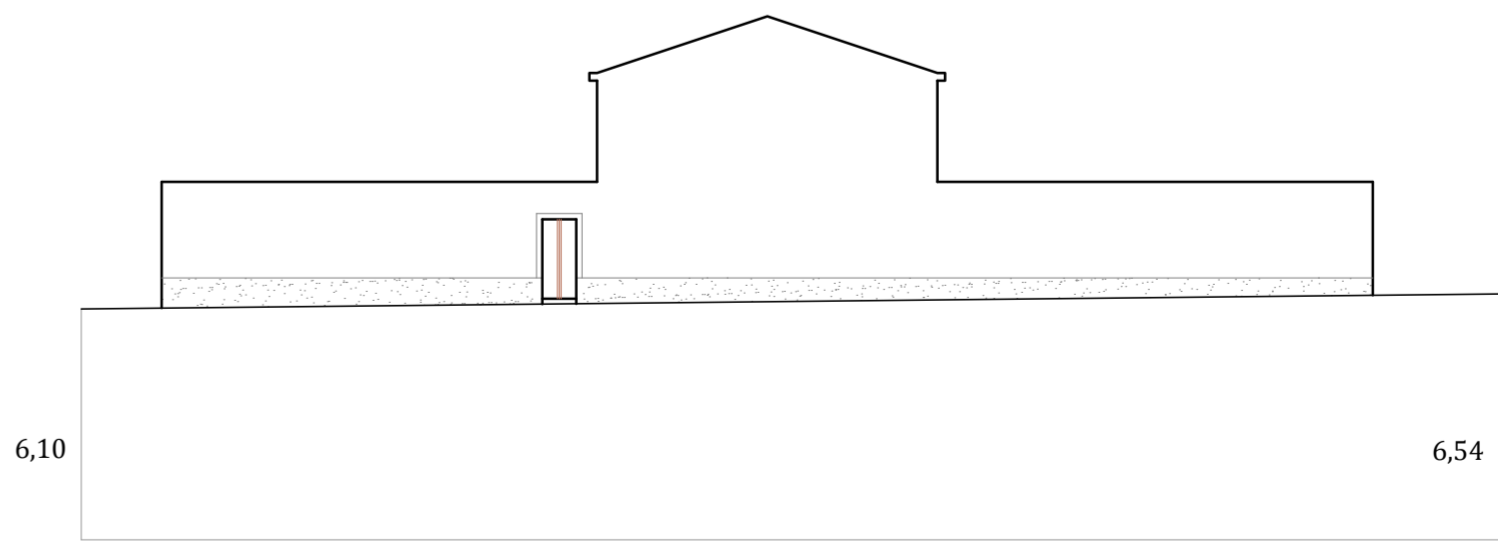
VIA TRIESTE

028



Via Trieste
ATTUALE

028



Via Trieste
PROFILO REGOLATORE