



COMUNE DI ASSEMINI

Isolato 23 - Via Cagliari

TAVOLA 23A

Scala 1:200

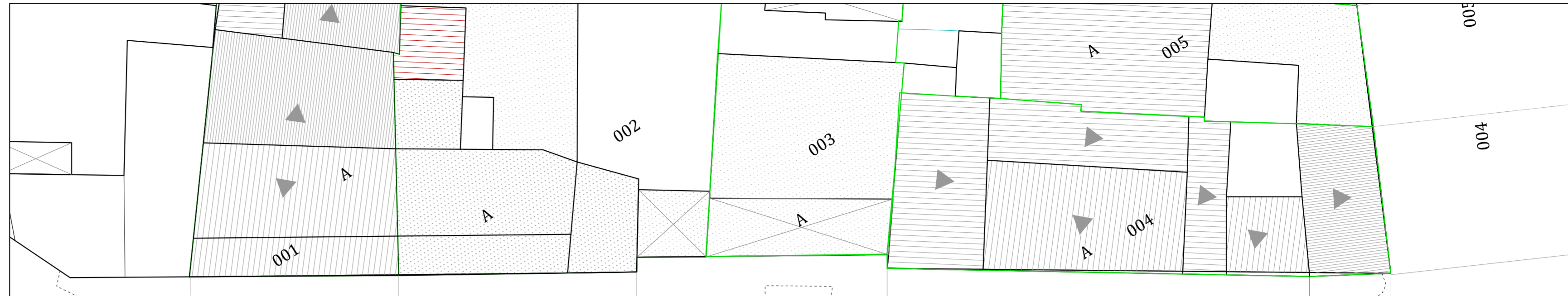


I PROGETTISTI: ING. ROBERTO LATTI

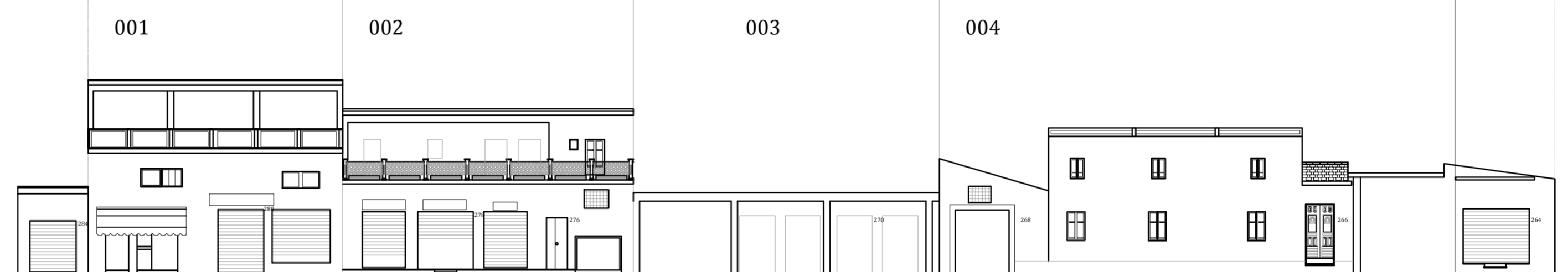
ARCH. MARIANNA MAMELI

IL DIRIGENTE DELL'AREA TECNICA: ING. ALESSANDRA SALVATO

IL COMMISSARIO STRAORDINARIO: DOTT. GEROLAMO SOLINA



VIACAGLIARI



Via Cagliari
ATTUALE

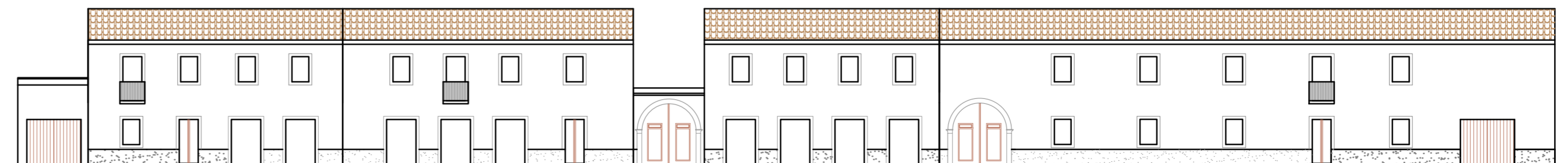


001

002

003

004



Via Cagliari
PROFILO REGOLATORE