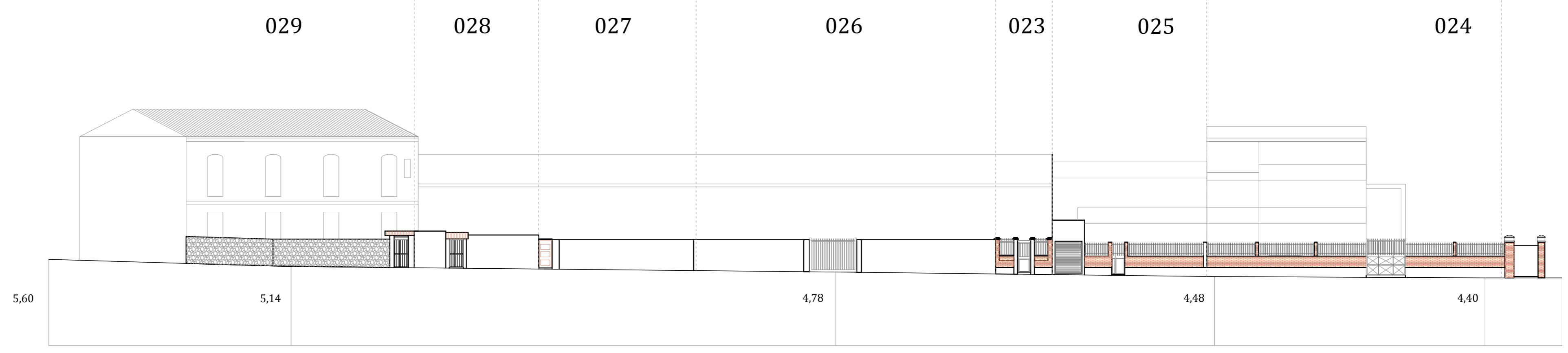
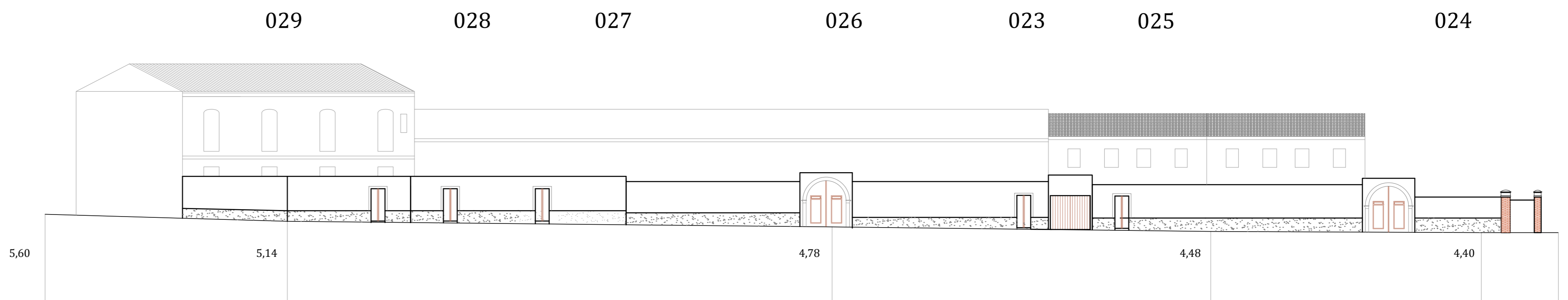



VIA ROMA




Via Roma
ATTUALE



Via Roma
PROFILO REGOLATORE



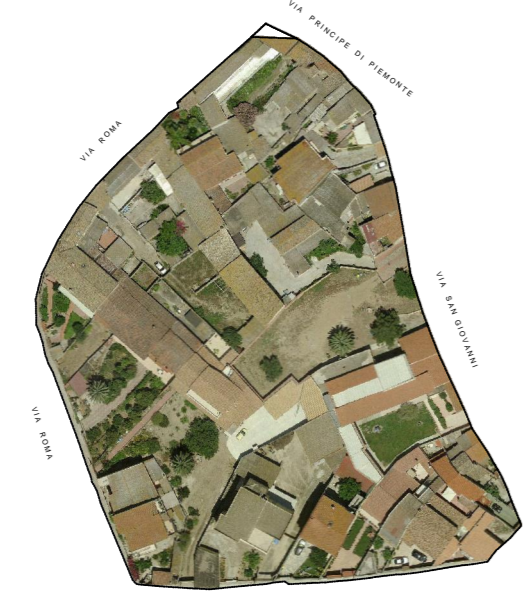


COMUNE DI ASSEMINI

Isolato 6 - Via Roma

TAVOLA 6B

Scala 1:200



I PROGETTISTI: ING. ROBERTO LATTI
 ARCH. MARIANNA MAMELI

IL DIRIGENTE DELL'AREA TECNICA: ING. ALESSANDRA SALVATO

IL COMMISSARIO STRAORDINARIO: DOTT. GEROLAMO SOLINA