



PIANO PARTICOLAREGGIATO DEL CENTRO DI ANTICA E PRIMA FORMAZIONE



COMUNE DI ASSEMINI

Isolato 8 - Via Trieste

TAVOLA 8B

Scala 1:200

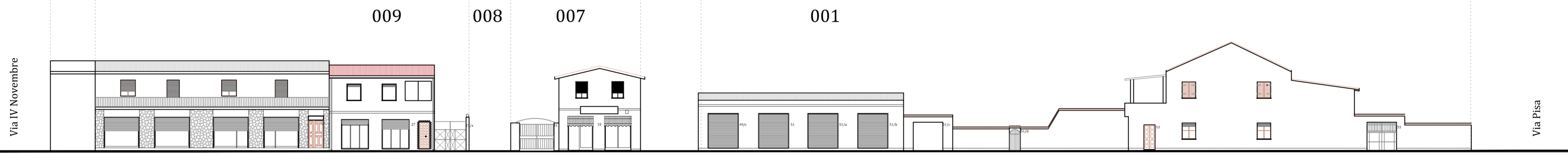
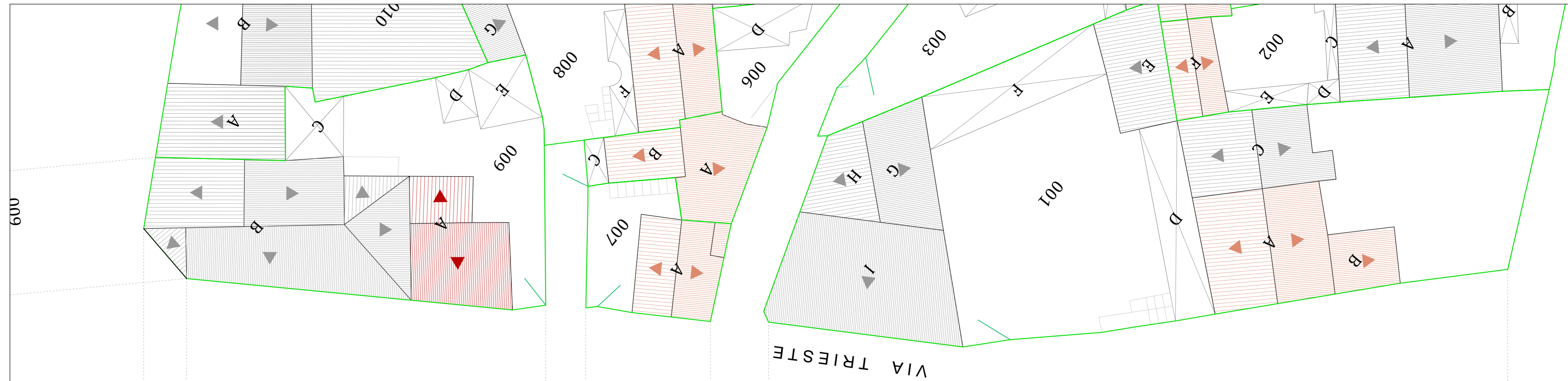


I PROGETTISTI: ING. ROBERTO LATTI

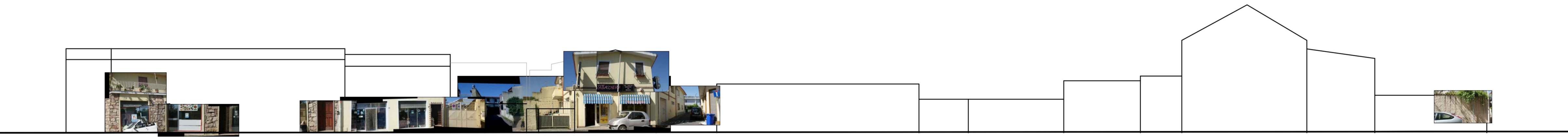
ARCH. MARIANNA MAMELI

IL DIRIGENTE DELL'AREA TECNICA: ING. ALESSANDRA SALVATO

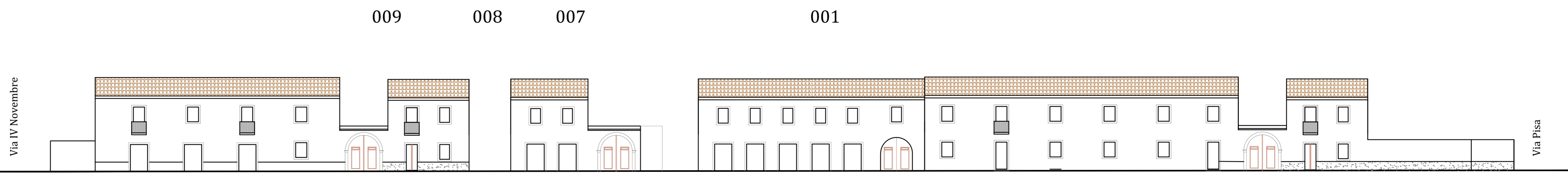
IL COMMISSARIO STRAORDINARIO: DOTT. GEROLAMO SOLINA



Via Trieste
ATTUALE



Via Trieste
PROFILO REGOLATORE



Via Trieste
PROFILO REGOLATORE